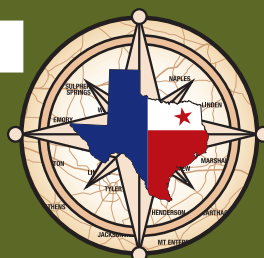




2025  
DESTINATION

**EAST  
TEXAS**







**Sulphur Springs**  
TEXAS

*Just play. Have fun. Celebrate!*



**SEE YOURSELF HERE,  
IN CELEBRATION CITY!**



[WWW.VISITSULPHURSPRINGSTX.ORG](http://WWW.VISITSULPHURSPRINGSTX.ORG)



# Enjoy *the* View

L<sub>TX</sub>NGVIEW

We are the East Texas regional hub for fun. We are blue skies and fish fries. We love The Great Texas Balloon Race and Downtown Live concerts. We are outdoor adventure, big trees, parks, trails, biking and birding. We are Art Walks, Wine Swirls and Arboretum strolls. We love our symphony, museums and live theatre. We are Longview, Texas. Come enjoy the View, we have lots to do.



VISIT *Longview*  
TEXAS

[VisitLongviewTexas.com](http://VisitLongviewTexas.com)

903.753.3281 | 109 West Tyler Street | Longview, Texas 75601







# IN THIS ISSUE

Alba .....	12	Greenville .....	30	Marshall .....	38
Big Sandy .....	14	Hallsville .....	31	Mineola .....	40
Bullard .....	15	Harleton .....	31	Nacogdoches .....	41
Caddo Lake .....	17	Hawkins .....	31	New London .....	42
Canton .....	18	Henderson .....	32	Overton .....	42
Carthage .....	20	Huges Springs .....	32	Quitman .....	43
Center .....	22	Jacksonville .....	33	Sulphur Springs .....	43
Corsicana .....	23	Jefferson .....	33	Troup .....	44
Edom .....	23	Kilgore .....	8	Tyler .....	44
Gilmer .....	26	Lake Fork .....	34	Whitehouse .....	45
Gladewater .....	28	Lindale .....	34	Winnsboro .....	46
Grand Saline .....	29	Longview .....	36		

2025 Destination East Texas is a product of the Kilgore News Herald.  
211 Kilgore Dr., Suite A, Henderson, TX 75652 • 903.984.2593 • kilgorennewsheald.com



**KILGORE**  
AREA CHAMBER OF COMMERCE



*Come Grow with us!*

POWERED BY THE KILGORE AREA CHAMBER OF COMMERCE

903.984.5022  
[www.KilgoreChamber.com](http://www.KilgoreChamber.com)

**Why Join the  
Kilgore Area  
Chamber of Commerce?**

- Networking
- Advocacy
- Credibility
- Visibility
- Learning
- Events
- Directories
- Community
- Involvement
- Referrals



# STAY WITH US AND ENJOY ELEGANCE AT ITS FINEST

## Historic Oaklea Mansion Bed & Breakfast

We offer the best of modern luxuries while staying true to the historic roots of the Oaklea Mansion. We're committed to providing every guest with the finest in hospitality and would love to welcome you as our guest.

Come step back in time and enjoy a luxurious weekend in one of the beautiful suites complete with antique bedroom sets and unique furniture pieces. Enjoy a delicious homemade breakfast each morning during your stay. Getaway to Winnsboro today and experience this one-of-a-kind National Landmark.

### SPECIALS & PACKAGES



#### Elegant Romance Package

When celebrating a special romantic weekend at Oaklea, don't forget to add some fresh chocolate covered strawberries, a beautiful bouquet of flowers, and a sparkling drink to your visit.

These beautiful items will be waiting for you and that special someone in your room when you arrive to start the evening off in a very romantic setting.

#### Picnic in the Oaklea Garden

Experience a nice relaxing picnic for two in the Oaklea Mansion gardens with sandwiches, baguette with dipping oil (made fresh at Oaklea Mansion), sparkling cider, and mixed fruits for your enjoyment.



#### Birthday Package

Celebrate that special someone with a birthday cake package during your stay at Oaklea Mansion. This package comes with a birthday cake, special for you and your family or friends, and a special card. Plus to make the package extra special a flower arrangement is included from the local flower shop in Winnsboro.

Feel free to enjoy your birthday cake in your suite or in the dining room for extra space to celebrate with all those in attendance. The small cake provided with this package can serve up to 8 people, a larger cake can be provided upon request.  
(additional costs may apply for a larger cake)



407 S Main St Winnsboro, TX 75494  
(903) 342-6051

[oakleamansionbb@gmail.com](mailto:oakleamansionbb@gmail.com)  
[www.oakleamansion.org](http://www.oakleamansion.org)





# Telling the Story. Preserving the History.

THE MUSEUM IS OPEN MONDAY - SATURDAY  
FROM 9AM TO 5PM, LAST ENTRY AT 4PM

903.983.8295

KILGORE.EDU/ETOM

f X Instagram @ETXOILMUSEUM



1301 S. HENDERSON BLVD.  
HWY 259 AT ROSS STREET  
KILGORE, TEXAS 75662



SCAN  
FOR  
INFO





# GENESIS PRIMECARE MARSHALL, TX



IT'S A  
*New Day*  
FOR YOUR FAMILY'S  
HEALTHCARE!

## Exploring???

### Our Services

GENESIS PRIMECARE PROVIDES A FULL RANGE OF PRIMARY AND PREVENTATIVE HEALTH CARE FOR THE WHOLE FAMILY; FROM NEWBORNS TO SENIOR CITIZENS.

## STATE OF THE ART FACILITY OPENING

*Summer* 2025!

PEDIATRIC, WOMEN'S  
HEALTH/OBGYN,  
BEHAVIORAL HEALTH AND  
PHARMACY

1900 E END BLVD  
MARSHALL, TX



### FAMILY MEDICAL CLINIC

805 Lindsey Dr.  
903.938.1146



### FAMILY III MEDICAL CLINIC

705 S. Grove St.  
903.472.7307



### PEDIATRICS

N. Houchen, MD | G. Hortman, MD |  
John English, FNP-C | Tara Holland, MD  
618 S. Grove St. Ste. 100 & 300  
903.927.6620



### PEDIATRICS

Jeri Charles, FNP-C  
620 S. Grove St., Ste. 105  
903.935.9441



### WOMEN'S HEALTH

Ricky Paul, MD., FACOG |  
Rikki Sandvik, APRN-CNP  
620 S. Grove St. Ste. 105  
903.935.9441



### BEHAVIORAL HEALTH

622 S. Grove St.  
903.702.7900

SAME DAY APPOINTMENTS  
AVAILABLE!

WWW.GENESISPRIMECARE.ORG



GPC is an FTCA deemed Federally Qualified Health Center (FQHC) and 501C3 nonprofit organization

# Kilgore

**K**ilgore, located just south of the intersection of Interstate 20 and U.S. 259, was established in 1872 with the coming of the Great Northern Railroad. The quiet farming community was thrust into the international spotlight in the 1930s with the discovery of one of the greatest oil fields in history. In just 10 short days, the town's population of 500 exploded to more than 10,000 people from all over the world seeking their fortunes in Boomtown, USA. By 1939, a forest of almost 1,200 oil derricks had sprouted within the city limits: the greatest concentration filling one square block became known as the World's Richest Acre, and Kilgore quickly became known as the capital of the huge East Texas Oil Field.

While all but one of those original derricks were removed across the following decades, in the past 30 years dedicated members of the community have resurrected Boomtown's signature skyline. The derricks that touch Kilgore's skies today, topped with lighted stars, helped the town earn its official, state-recognized moniker, "City of Stars."

**Can't Miss Events:** Kilgore's downtown is often filled with festivals and other events, from the annual Derrick Lighting in December to the annual Oktoberfest or regular Tuesday Tuesday lunchtime concerts. The Kilgore College Rangerettes, when not performing around the world, offer a series of annual performances including a holiday show and the annual Revels. Each year Kilgore College and the Texas Shakespeare Festival also offer productions of Shakespeare's works and other plays during the summer. The Reel East Texas Film Festival highlights local filmmakers each November, before a series of holiday events fill December's downtown calendar. Some of the city's more unique events include SAFFE Day, in which the Kilgore Fire Department hosts a festival and activities for children with special needs (and the wider com-



munity), as well as Avalon Faire, which hosts both a Renaissance faire and its own Oktoberfest each year. The East Texas Oilmen's Chili Cook-Off takes place each fall, drawing thousands downtown to try the best chili recipes the oilfield service companies offer.

**Other Attractions:** The World's Richest Acre celebrates Kilgore's oil history. Two historic theaters, the Crim and the Texan, are being restored and play host to various events. In addition to the Texas Shakespeare Festival, Kilgore College also offers student productions from its own theater department throughout the year. The East Texas




Oil Museum, also on the KC campus, offers a historical and educational look at the history of the East Texas Oilfield, complete with interactive exhibits that kids will enjoy. Those looking to explore the history of the Rangerettes drill team can visit the Rangerette Museum on KC's campus. A third museum, the Texas Museum of Broadcasting and Communications, highlights the Golden Age of broadcasting with exhibits and artifacts, including an ESPN mobile unit and a television camera that was on-site when Lee Harvey Oswald was shot by Jack Ruby, and both television and radio studios. Outdoor enthusiasts will include walking trails, the Big-head Creek Mountain Bike Trail and access to the Sabine River. Family-friendly activities include a splash pad and skateboard park. Kilgore College also boasts a botanical gem: The Shakespeare Garden, which offers varieties of flowers from Shakespeare's world. The LoneStar Speedway has reopened, offering car and monster truck races for automobile enthusiasts.



**More Information:**  
[www.cityofkilgore.com](http://www.cityofkilgore.com)  
[www.kilgorechamber.com](http://www.kilgorechamber.com)  
[visitkilgore.com](http://visitkilgore.com)

# Cash Cows. Liquid Assets.





## Fuel for Your Financial Future.

### FSB&T

FIRST STATE BANK & TRUST COMPANY

903-693-6606

110 WEST PANOLA STREET  
CARTHAGE, TEXAS 75633



## Shops on Main Marketplace

### Flowers by Design

213 E. MAIN | KILGORE, TX 75662

**903-984-9840**

TUES - FRI • 9:30 - 5:00  
 SATURDAY • 10:00 - 2:00  
 CLOSED SUNDAY & MONDAY







# ***Historic Downtown Kilgore***

*Love it like a Local!*



#HistoricDowntownKilgore

[www.VisitKilgore.com/Historic-Downtown/](http://www.VisitKilgore.com/Historic-Downtown/)

  kilgoremaintstreet







MEADOWBROOKKILGORE.COM | 903-218-6971

# Alba

**L**ocated at the intersection of U.S. 69 and FM 17 on the western edge of Wood County, Alba sits at the south of Lake Fork and about 10 miles west of Quitman. It has a population of 473. The town was founded by Joseph Simpkins and his family in 1843, with supplies for the first settlers coming by teams of oxen from Jefferson. The arrival of the MK&T Railroad contributed to its growth, and at one time Alba had the largest cotton market in East Texas. Coal was discovered in the late 1890s, and Alba's success on coal and cotton continued through about 1940 until the town declined. Notable residents include Leon Payne, "the Blind Balladeer."

**Can't Miss Events:** Christmas in the Park helps ring in the holiday season each December, and the town also puts on an Easter egg hunt and various fundraisers throughout the year.

**Other Attractions:** Lake Fork is the big draw, being a featured stop on the BassMaster tour and providing ample fun for the whole family. The Alba Public Library and Museum is located at 109 E. Holley, north of the town square. Golden Hour Garden offers you-pick strawberries, fresh flowers and more at 5207-4881 FM 2795.



**More Information:**  
[www.albatexas.org](http://www.albatexas.org)

## Dragons Nest

Food, Board Games, RPG's, TCG's



**FREE PICKLE FRIES  
OR MOZZARELLA  
STICKS 4CT**  
with purchase of 2 meals

903-987-2516  
302 E. Main St. Kilgore, TX  
[Nat20@dragonlootz.com](mailto:Nat20@dragonlootz.com)

**STORE HOURS:** MON-WED 11AM-8PM | THURS-FRI, SUN 11AM-10PM | SAT 11AM-11PM  
**GRILL HOURS:** MON-TUES 11AM-2PM | WED CLOSED | THURS-SUN 11AM-9PM





## Showcase & Museum

The Rangerette Showcase and Museum, located on the Kilgore College campus, features a mechanized display of Rangerette props, a display of costumes from the spring stage show -- Rangerette Revels -- and thousands of photographs and newspaper clippings.

**ADMISSION TO THE SHOWCASE IS FREE.**

Group tours are welcome by appointment. The showcase is located in the Physical Education Complex at Broadway and Ross, one block west of Highway 259.

## Hours

The Showcase is open Tuesday through Friday 10 a.m. - 3 p.m., and on Saturday 10 a.m. - 2 p.m.

 **KILGORE  
COLLEGE**  
EDUCATION WORKS.  
**kilgore.edu**



**SCAN FOR MORE  
INFORMATION**

903-983-8265  
mdehoyos@rangerette.com  
rangerette.com

*Located on the campus of Kilgore College at 1100 Broadway in Kilgore, Texas.*

# Big Sandy

Also known as Big Sandy Switch, the town is located at the junction of Texas 155, U.S 80 and FM 2911, about 14 miles west of Gilmer in Upshur County. It was founded in the early 1870s, with the Texas and Pacific Railway and the Tyler Tap eventually intersecting the town. The town experienced growth after World War II, becoming a regional hub.

**Can't Miss Events:** Big Sandy's residents and clubs host seasonal events all year, from fall festivals to Christmas celebrations, that provide that perfect small-town charm.

**Other Attractions:** The Big Sandy Music Hall is a historic church building and recording studio that hosts bluegrass, southern gospel, blues, country and rock concerts. Located in the heart of the town at 100 S. Tyler St., the music hall's motto is "World Class Music Close to Home." Circle M Crawfish, 14449 Texas 155 South, offers Cajun food and live music. The Big Sandy Civic Center also hosts events. The International ALERT Academy hosts an annual Christian family conference.



**More Information:**  
[www.bigsandytx.gov](http://www.bigsandytx.gov)



**SOMETHING FOR  
EVERYONE!**



**I-20 & HWY 42 • EXIT 587 • KILGORE**  
TRUCK, BUS, & RV PARKING



# Bullard

Straddling both Smith and Cherokee counties on U.S. 69 and FM 2137, 2493 and 344, Bullard is about 15 miles south of Tyler. It was originally called Etna or Hewsville, the town was re-named for John H. Bullard, a Confederate soldier who set up the first post office. Bullard's Black community centered around Corinth Missionary Baptist Church, one of the oldest Black churches in East Texas. Today much of the town's growth comes from its closeness to the metro hub that is Tyler.

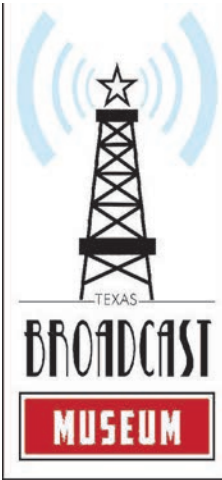
**Can't Miss Events:** Coptoberfest, the city's Halloween holiday hosted by the Bullard Police Department; Blast Over Bullard, the annual July 4th celebration; and Magic on Main, a family-friendly event to kick off the Christmas season, are some of the town's top things to do.



**More Information:**  
[www.bullardtexas.net](http://www.bullardtexas.net)  
[www.bullardchamber.com](http://www.bullardchamber.com)



**Other Attractions:** The Bullard Kids Park offers family fun. The American Freedom Museum offers a look at American military history and artifacts, including a signed document from each of the U.S. presidents. Moody Family Wines is a winery and giftshop. The Eagle's Bluff Country Club offers 18-hole golf, a clubhouse and 462 private acres to explore.



**TAKE A STEP BACK IN TIME  
WHEN YOU VISIT THE MUSEUM  
YOU WILL BE AMAZED**

A great place to have your next meeting, party or special event!

STUDIO

4

Texas Museum of  
Broadcasting & Communications



[www.texasbroadcastmuseum.com](http://www.texasbroadcastmuseum.com)

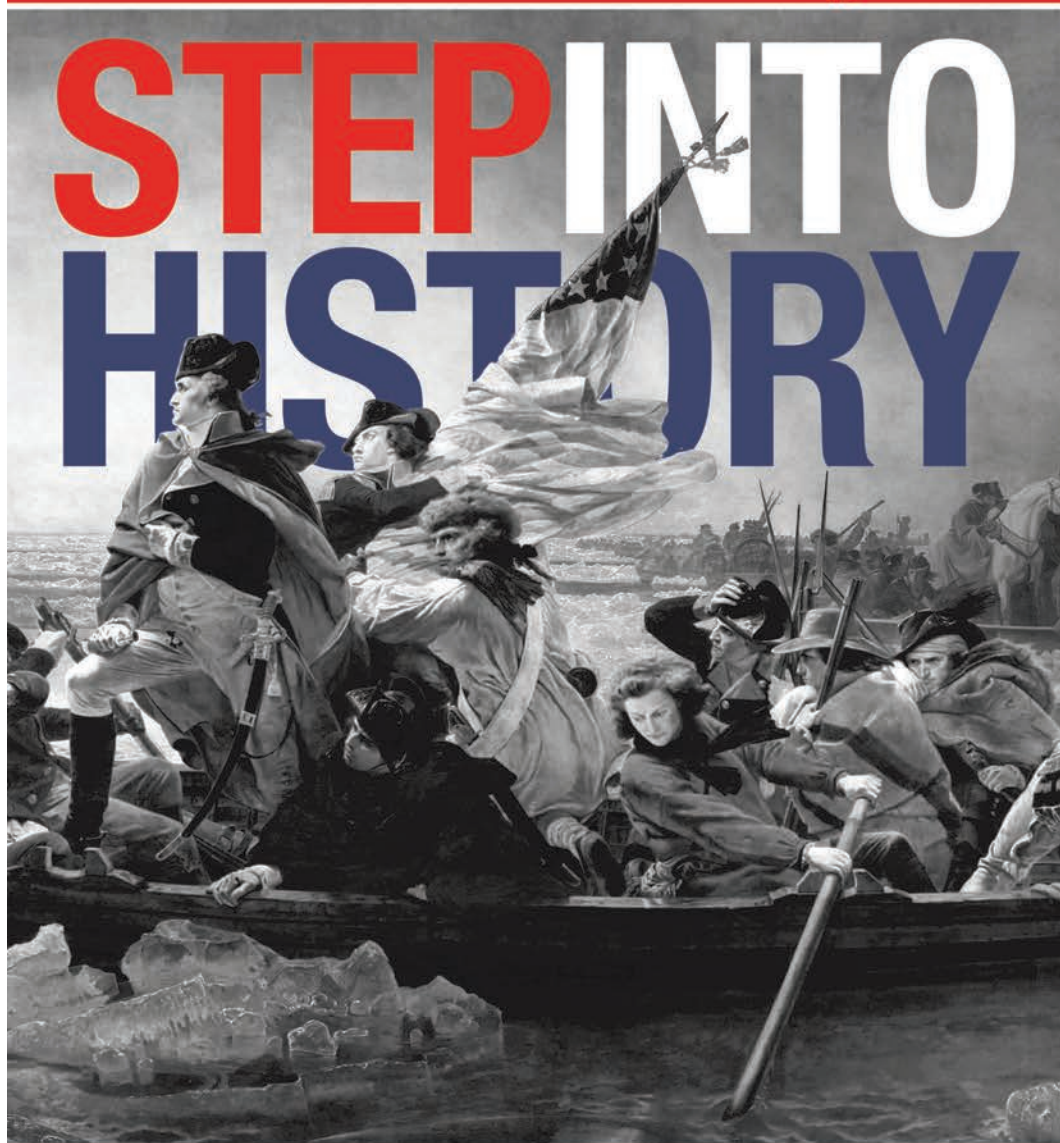


416 E Main St. Kilgore, TX 75662 | (903) 985-8115  
Fri-Sat 10-5 | Or by Appointment for Groups



# AMERICAN FREEDOM MUSEUM

*America's Story.  
Your Story.*



Open to the public Saturdays from 10am–3pm.  
Open to groups of 15+ by appointment on weekdays.

(903) 894-5252 | [americanfreedommuseum.org](http://americanfreedommuseum.org)

1051 N Houston St. Bullard, TX 75757  
*on the campus of The Brook Hill School*



# Caddo Lake

Caddo Lake has been called the most beautiful lake in America by most who have seen it. It is also a lake of mystery and lots of history. Caddo Lake is the largest natural lake of freshwater in the south, covering about 26,800 acres. Half the lake is in Texas and half in Louisiana, with the Texas sides being accessed at Karnack and Uncertain, and Caddo Lake State Park. There are four watersheds that supply Caddo Lake with water Little Cypress Bayou, Big Cypress Bayou, Black Cypress Bayou and Jeems Bayou. The Caddo Indians were the first settlers on Caddo Lake. They hunted, fished, made pottery and weapons. In 1835, the land of and around present-day Caddo Lake was purchased from the Indians for \$80,000 by the U.S. government, and within a year the Caddo Indians were moved away from the region.


**Can't Miss Events:** Each December, Uncertain residents host a Floating Christmas Parade, and several boat tours are available for those wishing to explore the lake and its history.

**Other Attractions:** Caddo Lake State Park affords excellent access to the diverse fishing in




Texas. Also popular are the park's quaint cabins, built by the Civilian Conservation Corps in the 1930s. Activities enjoyed by visitors include camping, hiking, paddling trails, picnicking, nature studies, fishing and boating, among other events. Canoe rentals are available year-round from the park headquarters. Jon boat rentals are available at Crip's Camp Marina in Uncertain, approximately five miles east of the park entrance on FM 2198. The Caddo Lake Institute also hosts several events each year





## CARTHAGE Country Club

*Golf • Restaurant • Bar • Pool*



### Fun for the Family!

Open to the public                      Tue-Sun 8am-Dark  
1135 US Hwy 79N • Carthage, TX • (903) 693-9900



## BILLY BOB'S ZIPLINE

*Elijah's  
SPEEDWAY  
GO-KARTS*

### BILLY BOB'S ZIP LINE

Monday-Friday (*appointment only*)  
Book online at [billybobszipline.com](http://billybobszipline.com)  
or call 903.720.6149 • 903.754.8474

*Walk-in*  
Saturday 9am-5pm | Sunday 2pm-6pm

4079 US 79 North  
Carthage, TX 75633

# Canton

Canton is the county seat in Van Zandt County, located on Interstate 20, about 14 miles southeast of Wills Point and about 60 miles east of Dallas. The Texas and Pacific Railway missed the town by about 10 miles when it was built in 1872, and according to the Texas State Historical Association, “citizens of Wills Point persuaded the county officials to move the county seat there. In the resulting dispute, residents of Canton in 1877 went armed to Wills Point to get the records back, and the county judge wired Gov. Richard B. Hubbard for aid. The Supreme Court of Texas finally decided in favor of Canton.” Notorious bank robbers Bonnie Parker and Clyde Barrow once lived briefly at the Dixie Hotel, built in 1915. Today, Canton’s population is about 4,312 – unless the World Famous First Monday Trade Days is taking place, at which point the city adds several thousand shoppers to the mix.

**Can’t Miss Events:** First Monday Trade Days is the oldest, largest, continuously operating outdoor market in the United States. Shopping days are on Thursday, Friday, Saturday and Sunday preceding the first Monday of every month, rain or shine, holiday or not with shopping areas that cover almost 400 acres and space for 7,000 vendors in five

locations around the city. Merchandise ranges from new home furnishings and furniture, clothing, jewelry, candles, handbags and shoes, electronics, iron works and outdoor decor, plants, tools, great food concessions and more, to antiques, collectables, quilts, intricate crafts, folk and fine art, woodworking and live animals and pets of all types and sizes. Canton is also home to the Tailwind Regional Balloon Fest, a hot air balloon competition that takes place in the summer.

**Other Attractions:** Canton is home to outlet malls, the Splash Kingdom Waterpark, the Van Zandt Country Club, the Van Zandt Veterans Memorial, Yesterland Farm and the Blackwell House Museum. The Canton Plaza Museum is home to the Brewer Bell collection, one of the largest bell collections in Texas, as well as a collection of Native American artifacts. Wired is one of the longest ziplines in Texas.



**More Information:**  
cantontx.gov,  
www.visitcantontx.com

See what's fresh at  
**FIRST MONDAY TRADE DAYS**  
*A Texas-sized shopping adventure!*

**MAKERS. PICKERS. CREATORS. THRIFTERS.**

**Canton**  
TEXAS  
SINCE 1850  
WORLD'S LARGEST 11th MARKET



# VISIT *Carthage*

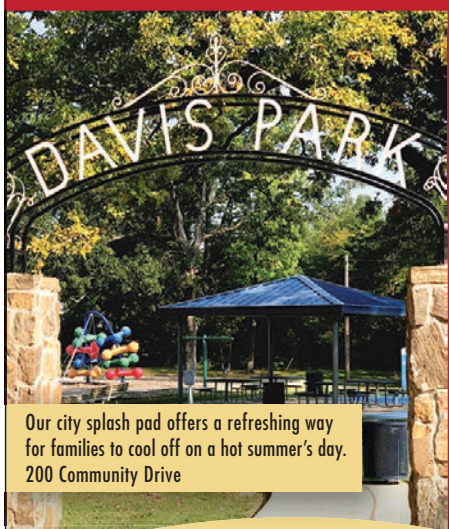
The rural setting of our community offers plenty of Texas hospitality and is a great place to settle down or just visit for a while!



Brand new All Abilities, All Ages park  
251 Jessie Drive



Almost 16,000 sq. foot multi-purpose building available to rent.  
1702 S. Adams



Our city splash pad offers a refreshing way for families to cool off on a hot summer's day.  
200 Community Drive



The trail provides a relaxing experience through mature oaks and pine trees of East Texas while offering the opportunity to view various wildlife.  
Ballpark Road



carthagetexas



City of Carthage, Texas- City Hall

812 W Panola St. | 903.693.3868 | [www.carthagetexas.com](http://www.carthagetexas.com)





# Carthage

**K**nown as the Gas Capital of the United States, Carthage has a lot of beauty, hospitality and events to offer its visitors. Carthage became a town and the county seat when Jonathan Anderson donated 100 acres in 1848. Pioneer families had settled in Panola County before that time and had a temporary county seat in the now-gone Pulaski on the Sabine River. But Anderson's donation of land in the center of Panola County has turned into a thriving community.

**Can't Miss Events:** The Texas Country Music Hall of Fame, which spotlights and honors celebrated Texas musicians in the country and western genres, hosts an annual induction ceremony and concert, bringing both big name acts and founding fathers of the genre to town each August. Carthage also boasts several big yearly events, including the Potlatch Festival in the fall and the Piney Woods Quilt Show in April.

**Other Attractions:** A memorial to Jim Reeves is located on U.S. 79 east of the city. Anderson Park, in the middle of the square, boasts a beautiful gazebo, lawns to run around on and a giant chess set. The Esquire Theater, about a block off downtown on West Sabine Street, hosts country and gospel concerts, as well as theater performances. Other attractions in Carthage include the Footprints in the Sand Monument park at the intersection of the Carthage Loop and Dixie Lake Road. The ballpark offers a walking trail and disc golf course, and an all-ages, all-abilities park is located on Bird Drive. A splash pad is at Davis Park. The Carthage Country Club, east on U.S. 79,



offers superior golfing for enthusiasts. Further out in Panola County, the only still-standing International Boundary Marker marks the border between the Republic of Texas and the United States. The boundary marker is located 100 feet off present FM 31 between Panola County in Texas and DeSoto Parish in Louisiana. Lake Murvaul is about 10 minutes west of the city on FM 1234.



**More Information:**  
[www.carthagetexas.us](http://www.carthagetexas.us)  
[panolacountytexas.com](http://panolacountytexas.com)



# Experience THE BEST

Visit  
CARTHAGE, TEXAS

## BEST EVENTS



LEFT: Piney Woods Quilt Festival MIDDLE: PRCA Rodeo & Jamboree RIGHT: Potlatch Festival  
For more information visit [panolacountytexas.com](http://panolacountytexas.com)

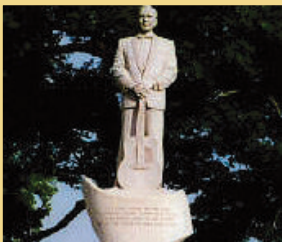
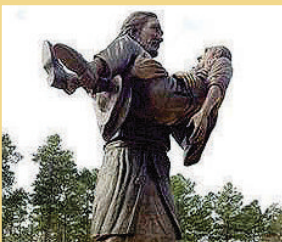


## BEST COUNTRY MUSIC



LEFT: Texas Country Music Hall of Fame, induction ceremony in August RIGHT: Country Music Hayride 2nd & 4th  
Saturday Nights Every Month

## BEST SITES



LEFT: Tex Ritter Museum MIDDLE: Footprints in the Sand Monument RIGHT: Jim Reeves Memorial

## BEST MAIN STREET



LEFT: Tunes & Trails MIDDLE: Esquire RIGHT: Park



# Center

**C**enter is located on U.S. 59 about 30 miles south of Carthage in Shelby County. The historic Shelby County courthouse located on the downtown square. Built in 1885, the courthouse was modeled after an Irish castle by architect J.J. F. Gibson, an Irish immigrant. As the story goes, Mr. Gibson was instructed to install an escape hatch next to the judge's bench just in case the verdict he handed down was not well-received. Two guards were posted at the back with shotguns to ensure that no one left until the judge was safely on his horse and gone. The 1884 jail, designed and built by Mr. Gibson, is now home to the Shelby County Chamber of Commerce.

**Can't Miss Events:** The East Texas Poultry Festival celebrates the area's poultry production heritage with a multi-day festival during the fall. The What-A-Melon Festival, sponsored by the Center Rotary Club, is typically held



**More Information:**  
[www.centertexas.org](http://www.centertexas.org)



the first weekend after the Fourth of July. There is also the Shelby County Grill Fest BBQ Cook-Off in March, Shelby County Bloomin' on the Square in April and Shelby County Sheriff's Posse Rodeo in June.

**Other Attractions:** The Rio Theater, the Shelby County Museum, the Day Lily Farm and the John D. Windham Civic Center offer family fun. Toledo Bend Lake is great for fishing and camping.



ANNUALS & PERENNIALS • THE LILY FARM NURSERY CARRIES IT ALL - FROM THE UNUSUAL TO THE UNBELIEVABLE



**Best Garden Center  
& Nursery**

*Thank You*

to our amazing customers for recognizing our nursery! Your support means the world to us, and we have even BIGGER plans for the future!!  
**God Bless You ALL!**

10056 HWY. 7 W • CENTER, TEXAS • 936-572-1962 • COME SEE US! • JOIN US ON FACEBOOK @ LILY FARM NURSERY





# Corsicana

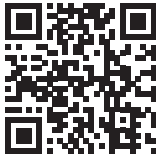
**C**orsicana is the largest city and county seat in Navarro County, about 58 miles southeast of Dallas at the junctions of Interstate 45, U.S. 75, U.S. 287, Texas 22 and Texas 31. The town was founded in 1848 to serve as the county seat of the new Navarro County, named in honor of José Antonio Navarro, a hero of the Texas Revolution, and grew steadily throughout the Civil War, Reconstruction, World War II, the oil boom and growth in factories throughout the 1900s. Corsicana is the birthplace to the Wolfe Brand Company, which produces the chili, as well as DeLuxe fruitcakes. Navarro College is home to a world-class cheerleading program.

**Can't Miss Events:** The Coyote Squadron of the Commemorative Air Force hosts a CAF Air Show each year. The Tour of Corsicana Bike Race and Derrick Days festival are held each spring, while the Cotton Harvest Festival takes place each autumn.

**Other Attractions:** The city boasts a number of entertainment venues, including 100 West, the Cook Center Planetarium, the Corsicana Opry, the Palace Theatre and the Warehouse Living Arts Center. Pioneer Village is a historical attraction



and research center focusing on Navarro County from 1838 onward and includes restored homes and shops, the Lefty Frizzell museum, McKie Playhouse, the Peace Officers Museum, the Sam Roberts Museum, an outdoor jail and a stagecoach. The Peach Museum offers Civil War and American West history. Angelita Vineyard and Purdon Groves offer tranquil getaways, while Richland Chambers Lake, the Oak Trail Golf Club, Upland Bird Company, Cotton Mesa Trophy Whitetail Ranch, Manx Outfitters and Navarro Mills Lake, among others, offer outdoor activities.



**More Information:**  
[www.cityofcorsicana.com](http://www.cityofcorsicana.com)  
[www.visitcorsicana.com](http://www.visitcorsicana.com)  
[www.corsicana.org](http://www.corsicana.org)

# Edom

**E**dom lies at the crossing of FM 279, FM 314 and FM 2339 about 16 miles southeast of Canton. The town traces its beginnings to 1849, when a post office called Hamburg was organized a few miles from the town's present site. In 1855, the post office moved closer to the present town site and was renamed Edom for the name given to Esau in the book of Genesis.

**Can't Miss Events:** The Edom Art Festival takes place on the second Saturday in October and features renowned artists and craftspeople from across the state. The festival is two days of art, music and food that provides fun for the whole family.

**Other Attractions:** The Edom Civic Theater offers various performances throughout the year. Blueberry Hills Farm offers you-pick blueberries and blackberries. The area also offers the Green Goat Winery and Vineyards, as well as The Valle Della Pace Vineyards. The Roseland Plantation offers guided tours. Morgan Creek Ranch offers hunting experiences.



**More Information:**  
[www.edomtexas.com](http://www.edomtexas.com)  
[www.visitedom.com](http://www.visitedom.com)



Located in the Piney Woods, Gilmer  
Civic Center and the Yamboree  
year-round



Queen Katie Ella Henson



## Calendar of Events for Gilmer, Texas

Risk It for the Brisket .....	April 5
1st National Bank of East Texas 125th Birthday .....	April 19
Goudarzi & Young Easter Egg Hunt .....	April 19
Chamber Benefit Softball Tournament .....	June 28
East Texas Yamboree Fireworks .....	July 3
Chamber's Purse Bingo .....	September 13
East Texas Yamboree .....	October 15-18
Antique & Classic Car Show .....	October 18
Treats on the Square .....	October 25
Goudarzi & Young Christmas Tree Lighting .....	November 20
Yulefest Reindeer Run .....	November 22
Yulefest .....	December 6

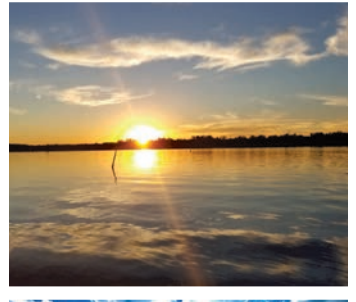


For more information and events, call:  
Gilmer Area Chamber of Commerce 903.843.2413  
Yamboree Office 903.843.3759  
Or go to:  
[www.yamboree.com](http://www.yamboree.com) • [www.Gilmer-Tx.com](http://www.Gilmer-Tx.com)  
[www.GilmerAreaChamber.com](http://www.GilmerAreaChamber.com)



# GILMER, TEXAS

er features Lake Gilmer on the Historic Cherokee Trace, the Gilmer Event Center with live entertainment, and the Historic Square with d events, shopping, brewery and restaurants.







# Gilmer

**G**ilmer is the county seat of Upshur County, located on U.S. 271, Texas 155 and Texas 154 about 20 miles north of Longview and 40 miles northeast of Tyler. The city is named for Thomas W. Gilmer, who died during the test firing of a new cannon on board the USS Princeton in 1844. In its early years, Gilmer served as a cotton-ginning center. It later began producing sweet potatoes, until they had to quarantine the crop in the late 1920s because of

an infestation of sweet-potato weevils. According to the Texas State Historical Association, "When the quarantine lifted, residents organized the East Texas Yamboree, a fall festival to celebrate the sweet potato harvest; the first festival was held in October 1935." As cotton ginning fell in the 1920s, the East Texas Oilfield rescued the town's economy and contributed to its continued growth in the 20th century.

**Can't Miss Events:** The East Texas Yamboree, the second oldest continuous festival in Texas, is a four-day tribute to sweet potatoes that draws an estimated crowd of 100,000 visitors. The Yamboree includes parades, the Yamboree Queen coronations, a carnival, a barn dance, a fiddle contest, a gospel stage, exhibits, livestock shows, agricultural contests and more.

**Other Attractions:** Outdoor enthusiasts will enjoy Lake Gilmer for crappie and bass fishing, as well as hiking and swimming, and the Barnwell Mountain Recreational Area, a motorized off-road park. Rowdy Creek Ranch boasts a winery and vineyard, dining, glamping, private events and live music. The Flight of the Phoenix Aviation Museum at Fox Stephens Field seeks to provide schoolchildren with a learning laboratory for aviation education. The Gilmer Country Club offers a nine-hole golf course. Learn about Upshur County history at the Historic Upshur Museum. Events take place throughout the year at the Gilmer Civic Center and the East Texas Yamboree Event Center. Calie's Acre hosts Easter egg hunts, Spring Break activities and pumpkin patches with lots of kid and family activities.

**The Auto Services You Need  
in a Comfortable, Family-  
Friendly Environment**



**Locally owned and operated  
tire shop in Gilmer, TX**

**Tires • Oil Changes  
Tune-ups • Suspension  
And so much more!**

**1221 US Hwy 271 N  
Gilmer, TX 75644  
903-797-0142  
[www.gilmertireandauto.com](http://www.gilmertireandauto.com)**



**More Information:**  
[www.gilmerareachamber.com](http://www.gilmerareachamber.com)



# “Antique Capital of East Texas”

*Come Shop, Dine,  
Play and Stay*



215 N Main St. | Gladewater, Texas | 903.845.5501

*...in partnership with Gladewater Economic Development Corporation*

## Monthly Events seen at Gladewater150.com

Gusher Days Bass Tournament - April  
21st Apron Strings: Ties to the Past – May  
88th Gladewater Round-Up Rodeo – June  
Fireworks & Boat Parade – July

52nd Arts & Crafts Festival – September  
Christmas Tyme in Gusherville:  
Antique District Open House – November  
Christmas Parade – December



# Gladewater

**G**ladewater, located on U.S. 80 and Texas 271 just southwest of Longview, is the antique capital of East Texas and a favorite tourism spot where visitors can enjoy a bit of history while browsing through the quaint old buildings. Gladewater was founded by the Texas and Pacific Railway Company in 1873 on land bought from Jarrett Dean and Anderson White. A community called St. Clair, two miles to the east, moved to Gladewater when the railroad announced that the only mail stop in the area would be there; residents from Point Pleasant, also bypassed by the railroad, moved to Gladewater.

**Can't Miss Events:** The annual PRCA rodeo draws hundreds of spectators each year. The city also hosts the East Texas Gusher Days, a celebration named after the region's oil history. Gusher Days offers arts and crafts, food, kids' activities, a car show, music and a bass tournament.

**Other Attractions:** Downtown Gladewater is a mecca for antique hunters, while outdoor enthusiasts will enjoy Lake Gladewater and access to the Sabine River. Stop by Mrs. Lee's Daffodil



Garden in the spring to see magic in bloom. The Gladewater Museum and Gladewater Veterans War Memorial also draw tourists. Gladewater Books offers used books, toys and ephemera.



**More Information:**  
[www.cityofgladewater.com](http://www.cityofgladewater.com)

**OPEN FRIDAYS & SATURDAYS**  
**10 a.m. to 4 p.m.**



**116 W. Pacific Street Gladewater, TX 75647**

**903-845-7608 [gladwatermuseum.org](http://gladwatermuseum.org)**

**[info@gladwatermuseum.org](mailto:info@gladwatermuseum.org)**

**Like us on Facebook!**





# Grand Saline

**G**rand Saline is located on U.S. 80 at Texas 110 about 15 miles northeast of Canton, and it's perhaps best known for one of the largest, purest salt domes in the world. First known as Jordan's Saline, Grand Saline was renamed after landowner Samuel Q. Richardson donated 50 acres for the townsite. According to the Texas State Historical Association, "After the Civil War Richardson drilled a local salt well to 350 feet. In 1875 the Richardson Salt Works was leased to a St. Louis company organized by G. M. Overlease. In 1890 an Indiana firm known as the Grand Saline Salt Company and later as Morton Salt Company drilled further at the site and began mining. Under the management of English engineer Andrew Wilderspin, improved methods were introduced, and in 1891 Byron Parsons organized the Lone Star Salt Company as the area's first steam-powered salt plant."

**Can't Miss Events:** The Salt Palace is the world's only building made completely of rock salt, and the museum offers a look at the role of salt in the town and how salt is made. The museum also offers displays on local notables Chris Tomlin, an

award-winning Christian musician, and Wiley Post, the first person to fly solo around the world. Post also invented the first full-pressure flight suit, pioneered high altitude flying and discovered jet streams.

**Other Attractions:** The old Grand Saline depot has been converted into a public library, and the old lumber yard that sat across the street has been converted into a city park. Two major festivals take place each year: the Main Street Festival and the Salt Festival. The East Texas Zoo & Gator Park, located just outside Grand Saline on FM 1255 off Texas 110, offers a glimpse of alligators from hatchlings to mature ones over 13 feet long. They also have rescued animals, monkeys, zebras and snakes as well as a petting zoo of barnyard animals.



**More Information:**  
[grandsalinetx.gov](http://grandsalinetx.gov)  
[grandsalinecd.com](http://grandsalinecd.com)



Come see our new Journey Through History exhibit that we opened last summer!



THE AUDIE MURPHY  
AMERICAN COTTON  
MUSEUM

Our mission is to educate the public and to preserve the history of Hunt County, Texas. Of particular emphasis is the impact of the cotton industry and the historical significance of our military heroes, especially Audie Murphy.

The Audie Murphy American Cotton Museum  
600 Interstate Hwy 30 | Greenville, TX 75402  
903-450-4502 | [cottonmuseum.com](http://cottonmuseum.com)

Hours of Operation  
Tuesday - Saturday: 10:00a.m. - 5:00p.m.  
Closed Sundays, Mondays and major holidays.



# Greenville

The seat of Hunt County, Greenville sits about 60 miles northeast of Dallas on Interstate 30. Greenville was carved out of the blackland prairie by pioneers who cleared the area's tall grass for new homes and farms and named after Thomas J. Green, who helped establish the Texas Republic. By the mid-1880s, cotton had become a major crop thanks to the area's rich black soil. Greenville-produced cotton became a favorite of mills in Liverpool and Manchester England, and eventually the city would be known as the "cotton capital of the world." Greenville boasted the world's largest cotton compress, breaking world records in 1911 and 1912.

**Can't Miss Events:** Each April the Hunt County Fair and Livestock Show celebrates the youth, agricultural, educational, economic, cultural and institutional strengths of Hunt County, and offers entertainment, carnival rides, fair food and more. Audie Murphy Day in May and the Bob Wills Fiddle Festival and Contest in November celebrate native sons who became famous in their own right. The third Saturday in September includes the Cotton Patch Challenge Bike Ride and accompanying Lee Street Jamboree.



**Other Attractions:** The Audie Murphy American Cotton Museum hosts historical exhibits and regular events, and the Greenville Municipal Auditorium hosts regular concerts. Other must-visit places are Landon Winery, the Texan Theater and the Splash Kingdom Air Patrol Water Park. Lake Tawakoni, known as the Catfish Capital of Texas, is just 20 minutes south and offers many outdoor activities. Find skydiving opportunities at the Dallas Skydive Center west of town in Caddo Mills. Greenville is also host to three entry points on the Northeast Texas Trail, the longest trail in Texas, and offers a chance to see traces of the old Bankhead Highway, the nation's first paved transcontinental highway, in the downtown area.



**More Information:**  
[www.ci.greenville.tx.us](http://www.ci.greenville.tx.us)  
[www.greenville-texas.com](http://www.greenville-texas.com)  
[www.greenvillechamber.com](http://www.greenvillechamber.com)



## EXPERIENCE GREENVILLE

Discover the charm of Greenville, Texas. Small-town hospitality meets big-time fun. From historic downtown to scenic parks and lively events, enjoyment awaits around every corner.





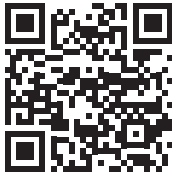
# Hallsville

Originally settled in 1829 as Fort Crawford, Hallsville is located at the intersection of U.S. 80 and FM 450 in Harrison County between Marshall and Longview. The town's first business was a saloon, and from 1869 to 1872, Hallsville was the terminus of the Southern Pacific Railway. The railroad would eventually expand to Longview and move its headquarters to Marshall, but the town remained and still draws residents to this day.

**Can't Miss Events:** Taking inspiration from its early days, the town celebrates with its Western Days festival and parade each fall. The festival takes over downtown one weekend each year, with live music, dancing, shopping, festival rides, a beauty pageant and a parade that draws thousands of peo-

ple to the main drag. During the Christmas season, City Park hosts a large lighting display and other fun activities for the whole family.

**Other Attractions:** Brady Branch Reservoir offers fishing opportunities. The Gold Hall hosts community and regional events. The area boasts a wide variety of dining, from Gino's Italian Kitchen and diner Miss Minnie's Place in downtown to the popular food truck Tacos Leons on your way to Longview.



**More Information:**  
[cityofhallsvilletx.com](http://cityofhallsvilletx.com),  
[hallsvillecommerce.com](http://hallsvillecommerce.com)

# Harleton

Harleton is located on Texas 154, about 15 miles northwest of Marshall and a short drive from Lake O' the Pines. The town was originally called Fontana and established about 1890, with the Paris, Marshall and Sabine Railroad passing through a year later. In 1892 the community changed its name to Harleton, for J. W. Harle, a sawmill operator who built a tram railroad from Marshall to move timber from his mill, according to the Texas State Historical Commission.

**Can't Miss Events:** Enoch's Stomp, a vineyard and winery, offers events throughout the year for guests and local residents alike, including an annual grape stomp.

**Other Attractions:** Fugler's Grocery & Market draws foodies from across the region. Lake O' the Pines offers fishing, camping, boating and other outdoor activities just now the road. Just down the road to the west is the Josephine Davidson Memorial Chapel, home to two yearly meetings of the Davidson Foundation, one in the fall where someone "learned in the Constitution and laws of the land" would speak, and one in the spring for a celebration of "the faith of our fathers."



**More Information:**  
[www.enochsstomp.com](http://www.enochsstomp.com)

# Hawkins

Located at U.S. 80 and FM 14, Hawkins boasts a rich history. The town received its post office in 1873, the same year the Texas and Pacific Railway built through the area on its way to Dallas. The area has been fairly well settled before the railroad's arrival, as it was near the river crossing to Belzora, and was an early port and stagecoach crossing on the Smith County side of the Sabine River. Established in 1912 in Hawkins as an institution for teachers, Jarvis Christian College began as Jarvis Christian Institute. Today, the college is a private, residential, Historically Black Liberal Arts College affiliated with the Christian Church (Disciples of Christ). In 1995, the Texas Legislature declared Hawkins the "Pancake Capital of Texas" in honor of native Lillian Richard, who in 1925 served as a national model for Quaker Oats.

**Can't Miss Events:** The Hawkins Oil Festival, held in October, celebrates former lightweight boxer Bobby Manziel's October 1940 discovery of oil in Wood County and the oil boom that followed. Jarvis Fest is put on by the college to raise money for the United Negro College Fund and offers food, concerts, fellowship and more.

**Other Attractions:** Lake Hawkins offers a beach, an RV park, bird watching and other outdoor activities, as well as a Christmas event each year called Light Up Lake Hawkins. The city is also just north of the Little Sandy National Wildlife Refuge. Among the city's parks facilities is a splash pad.



**More Information:**  
[www.hawkinstx.org](http://www.hawkinstx.org)

# Henderson

**H**enderson is the county seat of Rusk County, and is located on U.S. 259 about 30 minutes south of Longview. The city was named after the first governor of the state, James Pinckney Henderson and earned fame in 1930 when the East Texas oil-field was discovered at the Daisy Bradford No. 3 well site. Today the city boasts restored downtown buildings and a bustling atmosphere.

**Can't Miss Events:** The annual Heritage Syrup Festival draws thousands each fall, with activities for the whole family that celebrate the tradition of ribbon cane syrup. The highlight is the syrup making demonstration on the Depot Museum grounds. Experienced syrup makers operate the museum's antique mule powered equipment to produce old fashioned cane syrup, but visitors will also find artists, craftspeople, food, music and a petting zoo.

**Other Attractions:** The restored Opera House is home to the Henderson Civic Theatre. A self-guided wildflower tour is hosted each spring, with driving maps available on the [visithenderson.tx.com](http://visithenderson.tx.com) website. The Depot Museum houses



the Rusk County History Museum and Children's Discovery Center at 514 N. High St. It encompasses five acres, with 13 structures and a restored 1901 Missouri Pacific Railroad caboose. Gaston Museum is located at 6562 Texas 64 in Joinerville, six miles west of Henderson.



## More Information:

[www.henderson.tx.us](http://www.henderson.tx.us)  
[www.visithenderson.tx.com](http://www.visithenderson.tx.com)  
[www.mainstreethenderson.com](http://www.mainstreethenderson.com)

# Hughes Springs

**"H**ospitality is a habit" in Hughes Springs. Settled in the 1800s at what is now Texas 49 in southwestern Cass County, the town was first called Chalybeate Springs and attracted visitors and eventually a popular health resort to its mineral springs. The town's industry would later give way to industrial and agricultural facilities — in 1925, the town had a sweet potato curing plant handling about 25,000 bushels a year.

**Can't Miss Events:** For more than 50 years, Hughes Springs has hosted the annual Wildflower Trails of Texas Festival with neighbors Avinger and Linden each spring. The celebration honors the thousands of varieties of wildflowers growing along Texas 11, Texas 155 and Texas 49, and includes family-friendly fun. The city also hosts an annual Holiday on First Street and Cork & Fork event in the fall.

**Other Attractions:** Hughes Springs is minutes away from several recreational lakes. A Veterans Memorial Wall, city parks and the public library (with its own museum) also attract visitors. Wineries and downtown businesses offer shopping opportunities.



## More Information:

[www.hughesspringstxusa.com](http://www.hughesspringstxusa.com)




**Open Year Round**  
 Mon - Fri 9:00 am - 4:00 pm  
 Saturday 9:00 am - 100 pm  
 Admission Fees:  
 \$3 Adult, \$2 Senior \$1 Child  
 \$1 Carousel Rides  
[www.depotmuseum.com](http://www.depotmuseum.com)  
[depot@depotmuseum.com](mailto:depot@depotmuseum.com)

**History Center**  
 Wednesday 1:00 pm to 4:00 pm  
 Or BY Appointment  
 Monday-Saturday  
 903-657-2261  
[Historicalcommission@ruskcountyTX.gov](mailto:Historicalcommission@ruskcountyTX.gov)

The Depot museum is a Rusk County History Museum with a Children's Discovery Center. The purpose of the museum is to collect and preserve the material culture and history of Rusk County and to interpret and display the artifacts for the education and enjoyment of the general public. Clustered on five acres are twelve restored structures from Rusk County's past. The museum introduces guests to the early residents of Rusk County- an intriguing blend of Native Americans, settlers, and oil- hungry wildcatters. The Rusk County Historical Commission/History Center is also on the grounds. The education and preservation of our county history is our main mission.



**514 N. High Street**  
**Henderson, TX**  
**903-657-4303**



# Jacksonville

**J**acksonville is located on U.S. 69 in Cherokee County. According to the Texas State Historical Association, “It began on the east bank of Gum Creek in 1847. That year Jackson Smith built a house and a blacksmith shop in the area; he was appointed postmaster when the Gum Creek post office was authorized in 1848. Soon after, Dr. William Jackson built an office near Smith’s shop. In 1850 Smith had a townsite and square surveyed near his home. Since the townsite was on Jackson Smith’s land and Dr. Jackson was among the first to build inside the boundaries of the survey, the name Jacksonville was chosen by local citizens for the new town.” The town would later be moved about two miles east to a site next to the new International-Great Northern Railroad.

**Can’t Miss Events:** Jacksonville was a leader in peach production from the 1880s to 1914 until the crop was dethroned by tomato, which remained the primary crop until the 1950s. During this time, Jacksonville earned the title “Tomato Capital of the World.” That history is celebrated each year at the

annual Tomato Festival, with music, food and great fun.

**Other Attractions:** Love’s Lookout State Park offers a 30-mile skyline, and Lake Jacksonville is a boating and fishing playground. The Neches River National Wildlife Refuge’s 7,000 acres offer nature trails, and the River Run ATV Park offers four-wheeler fun. The Cherokee Trace Drive-Thru Safari is always a hit with kids, and families will also enjoy the Texas State Railroad, which offers events throughout the year. The Vanishing Texana Museum, offers an impressive collection of antiques, curiosities, ephemera and vestiges from the region and beyond, with the majority of the items dated from 1830 through 1950.



## More Information:

[www.jacksonvilletx.com](http://www.jacksonvilletx.com) [www.jacksonvilletexas.com](http://www.jacksonvilletexas.com)  
[jacksonvilletexas.com](http://jacksonvilletexas.com) [explore-jacksonvilletx.com](http://explore-jacksonvilletx.com)

# Jefferson

**J**efferson, located on U.S. 59 about 15 miles north of Marshall and Interstate 20, is known as the “Riverport to the Southwest.” The city’s early heydays were a time when steamboats plied the Big Cypress River from the Port of New Orleans and the city was one of the first entry points to Texas. “The first steamboat, the Llama, reached Jefferson in late 1843 or early 1844,” the Texas State Historical Association says. “A post office was established in 1846, and the town was incorporated in March 20, 1848, though because of various delays a city charter was not adopted until 1850.”

**Can’t Miss Events:** Laissez les bons temps rouler is the motto of the day each February as the city hosts its annual Mardi Gras Upriver celebration. The weekend event includes parades, a ball, a carnival, concerts and lots and lots of food. Every year during the holiday season, the Candlelight Tour of Homes showcases some of the city’s best and most historic houses.

**Other Attractions:** There are boat rides on Big Cypress Bayou and Caddo Lake, wagon and surrey rides, rides on a railroad train and lots of shopping downtown. Along with the many history-oriented sites and its bustling downtown, Jefferson is known for legends of ghosts who haunt



some of its more historic buildings. Ghost tours are regularly available. Also look for the Gone With the Wind Museum, the Freeman Plantation, Caddo Lake State Park, the Museum of Measurement and Time and productions from the Opera House Theatre Players. Jefferson is also home to the Texas Big-foot Conference.



## More Information:

[visitjeffersontexas.com](http://visitjeffersontexas.com)  
[www.jeffersontexas.us](http://www.jeffersontexas.us)

# Lake Fork

**L**ake Fork is one of the premier trophy bass fishing lakes in the world and serves as a reservoir for Dallas and its neighboring areas. Lake Fork holds 16 out of the top 20 Texas State Record largemouth bass coming from the 27,690 acre body of water. It is situated in Wood, Rains and Hopkins counties between the towns of Yantis, Alba, Emory and Quitman. Great restaurants and nightclubs offering some of the best live entertainment in East Texas are also delightful features at Lake Fork.

**Can't Miss Events:** Each year in September, Bob Sealy of Sealy Outdoors brings the Big Bass Splash to the west side of the lake. This tournament also brings in thousands of fishermen and fans to the area with great prizes for the winners. The big lake also hosts the annual Skeeter Owners Tournament, Yantis Catfish Classic and various events sponsored by the Lake Fork Chamber of Commerce.

**Other Attractions:** There are several marinas, motels and rental cabins on the lake, with plenty of outdoor activities to do. Avid golfers can choose from two challenging golf courses, each with scenic views of the lake. Lake Fork Golf Course is an 18-hole course designed for mid-handicappers, with shorter challenging fairways and larger greens. It is located on the lake's west side. The Links at Land's End is on the east side of the lake and has consistently been named to the top 50 golf courses in the state. It was inspired by the original Land's End on the southwestern tip of England. Links at Land's End also includes a full service restaurant, sports bar and an event pavilion.



## More Information:

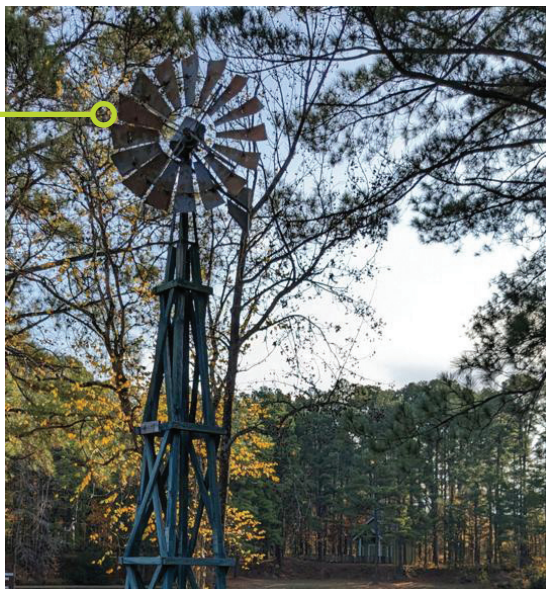
[www.tpwd.texas.gov/fishboat/fish/recreational/lakes/fork/](http://www.tpwd.texas.gov/fishboat/fish/recreational/lakes/fork/)

# Lindale

**L**indale is located on U.S. 69 about 10 miles north of Tyler. The area was settled in 1873 when the Lyndale Post Office opened – about a year later, the name was changed to Lindale, and the year after that the railroad came. The town was kept alive during the Great Depression by the nearby Civilian Conservation Corp Camp 896, the Texas State Historical Association says, and farmers in the area took part in the Duck Creek Program, looking for ways to prevent soil erosion. Today the city's growth can be attributed to its nearness to Tyler, as well as its growing business community, which includes Lindale native and country music star Miranda Lambert, whose Pink Pistol Boutique draws tourists from all over.

**Can't Miss Events:** The Piney Woods Wine Festival features 20 award-winning wineries on the Piney Woods Wine Trail, as well as live music and food. The annual Christmas in Lindale event brings the magic of Christmas to downtown, with lots of family-friendly activities.

**Other Attractions:** Housed in one of the oldest cannery buildings in Lindale, Lindale's downtown district has been re-developed into a "Live, Play and Work" environment with shops, restaurants, five different concert venues and more. The Lindale Candy Company has been in business for more than 75 years and offers hand-pulled peppermint and other



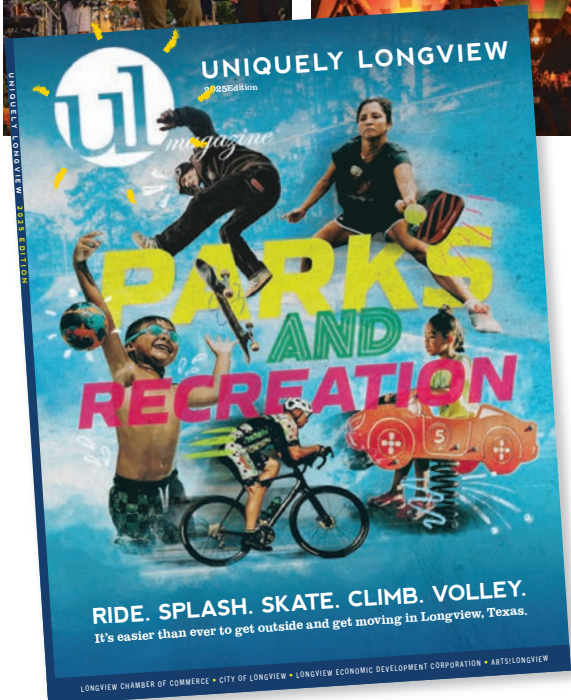
traditional sweets. Faulkner Park offers 170 acres of space, with athletic fields, tennis courts, a pavilion, walking trails and a 15-acre lake. The Old Mill Pond Museum features historical treasures and artifacts depicting early American life circa 1850 to 1950. Be sure to visit the General Store while you're at the museum; the store offers souvenirs and handmade items crafted by local artists.



## More Information:

[www.visitlindale.com](http://www.visitlindale.com/),  
[www.lindaletx.gov](http://www.lindaletx.gov)





READ THE  
2025  
**UNIQUELY  
LONGVIEW**  
MAGAZINE ONLINE

- Parks & Recreation
- Indoor & Outdoor Events
- Local Dining Guide
- Map of Longview Area & Downtown
- Health Care in East Texas
- ARTS! Longview Cultural District
- Art, History, & Science Museums
- Things to do!

## Uniquely Longview

Longview, Texas is a wonderful place to live, work and play!  
We collaborate with community partners to highlight  
aspects of our area that are unique to Longview.

**UniquelyLongview.com**

✉ [visit@uniquelylongview.com](mailto:visit@uniquelylongview.com)

📘 [UniquelyLongviewMagazine](https://www.uniquelylongviewmagazine.com)

📷 [Uniquely\\_Longview](https://www.instagram.com/Uniquely_Longview)

🌐 [UniquelyLongview.com](https://www.uniquelylongview.com)



Follow along on  
Kristin's UL Live  
adventures!



Kristin Koonce  
Burroughs  
UL Live Reporter

# Longview

**N**estled between Tyler and Marshall on Interstate 20 and intersecting with U.S. 259 and U.S. 80, Longview is one of East Texas's major hubs, offering lots to do for both residents and visitors alike. The area includes land first granted to white settlers in 1835, with the city's growth attributed to first the railroad and then later I-20. In 1942 construction began on the Big Inch pipeline, which originated in Longview, according to the Texas State Historical Association. From February 13, 1943, through August 31, 1945, this pipeline transported more than 261 million barrels of crude oil to the East Coast for refining. This ensured an uninterrupted supply of gas and oil during World War II, the commission said. Longview also became home to several important industrial plants, including Eastman Chemical Company, during the 1900s.

**Can't Miss Events:** The Great Texas Balloon Race draws hot-air balloon pilots and enthusiasts to Longview every summer for a three-day competition that also features concerts, food and exhibits. The Dalton Days festival provides a dramatic re-enactment of the famous Dalton Gang Bank Robbery, plus a wild west show, for families. The





*Mary Lou Clendenin*  
Broker Assoc.  
903.452.2712  
MaryLou@Homes4tx.com



**BOLD**  
REAL ESTATE GROUP

**YOUR NEXT MOVE  
STARTS HERE**

Let our 59 Combined years of  
selling East Texas service you.  
Specializing in residential,  
commercial and investment  
properties.







*Delena Dorgan*  
Realtor  
903.557.0671  
DelenaDorgan1@gmail.com



Gregg County Fair offers old-fashioned carnival fun. The annual Zonta Antiques Show & Sale draws thousands of guests and more than 50 dealers. Downtown Longview plays hosts to a number of events, including the popular ArtWalk events and summer concerts.

**Other Attractions:** Museums include the Longview Museum of Fine Arts, the Gregg County Historical Museum and kid-focused Longview World of Wonders. The ArtsView Children's Theatre puts on productions throughout the year, and LeTourneau University's Belcher Center offers concerts, comedians and other entertainment as well. The Longview Mall offers a wide variety of shopping.



**More Information:**  
[www.longviewtexas.gov](http://www.longviewtexas.gov), [www.visitlongviewtexas.com](http://www.visitlongviewtexas.com)





Gregg County Historical Museum Presents:

# Conquering the Seas: Unveiling its Secrets

April 22 - August 29, 2025



This event is made possible,  
in part, through a grant from  
the City of Longview.




**30th Annual**  
Marshall News Messenger  
Hometown  
**Best Winner**  
Readers' Choice Award  
**2023**

**Hometown Best Mexican Food 2023**

**Among the Best Mexican Restaurant 2023**

**Carry out • Catering**

**903-472-5697**  
**1205 E. End Blvd S.**  
**Marshall Texas, 75670**

# Marshall

**M**arshall is located on Interstate 20 between Longview and Shreveport and intersects with U.S. 59. The city offers historic charm and a wealth of history, starting with the arrival of Jay Gould's Texas and Pacific Railroad to its status as the birthplace of Boogie Woogie music and its legacy of Civil Rights activism – two historically Black colleges, Bishop College and Wiley College, produced some of the country's greatest leaders in the movement. The town also is home to what many consider to be the finest courthouse in all of Texas: a restored, yellow-hued Renaissance Revival-style 1901 courthouse that still sits in the middle of Whetstone Square today.

**Can't Miss Events:** Every October, the city plays homage to the Fire Ant – an unlikely celebration, to be sure, but one that draws large crowds with its carnival rides, gurling contest, Tour de Fireant race, parade and more. The city's other must-do event is Wonderland of Lights, a monthlong Christmas celebration that includes the addition of thousands, if not millions, of lights to the downtown area each year. Wonderland also includes regular visits from Santa, an ice skating rink,



train rides, horse-drawn carriage rides and more. The town is also now home to the Texas Sounds International Country Music Awards.

**Other Attractions:** Downtown Marshall offers world-class restaurants, as well as Telegraph Park, which hosts a number of concerts throughout the year. The T&P Railroad Museum is located inside the Depot building still in use today by Amtrak. The Starr Family Home is a state historical site operated by the Texas Historical Commission. The Harrison County Historical Museum is located within the historic courthouse and highlights the rich heritage of Harrison County from its early days. Memorial City Hall, on the square downtown, provides concerts and other performances from internationally-known artists and community groups alike. The Michelson Museum of Art houses both local and traveling exhibits. City Arena, on Poplar Street, plays host to many events, such as rodeos hosted by Martha Josey, a Marshall resident and former Olympian whose skills earned her wide acclaim and who now passes on her gifts to others at rodeo clinics.

## PASTA & PIZZA

PROUDLY SERVING MARSHALL FOR 20 YEARS!  
THANK YOU MARSHALL FOR YOUR SUPPORT!

5555 EAST END BLVD. S.  
(903) 923-9527 | [WWW.CAFEITALIAMARSHALL.COM](http://WWW.CAFEITALIAMARSHALL.COM)



### More Information:

[www.marshalltexas.net](http://www.marshalltexas.net)

[www.visitmarshalltexas.com](http://www.visitmarshalltexas.com)





101 Austin St, Marshall, TX  
 (903) 472-4555  
 Monday - Saturday 11 AM - 9 PM



105 E Houston St, Marshall, TX  
 903-578-6224  
 Tuesday - Saturday 4 PM - 9 PM



Pietro's Neighborhood Pizzeria & Cafe  
 2418 Gilmer Rd Longview, TX 75604  
 (903) 295-7900  
 Tuesday - Saturday 11 AM - 9 PM



205 N Washington Ave  
 Marshall, TX 75670  
 903-472-4822  
 Thursday - Saturday 5 PM - 10 PM

# Mineola

**M**ineola is located at the intersection of U.S. 69 and U.S. 80, about 80 miles east of Dallas in Wood County. Before 1873, the place was called Sodom. The town grew with the railroad, and today keeps that history alive with a number of attractions.

**Can't Miss Events:** The Hiway 80 sale is a large garage sale in October along U.S. 80 from just west of Dallas to the Louisiana border. The Mineola League of the Arts offers an art show and other events each year.

**Other Attractions:** The Iron Horse Square is a five acre area in downtown Mineola that celebrates the area's railroad heritage while offering events and concerts throughout the year, and rides on the Harry Meredith Special, a 15-inch scale model train. The Mineola Historical Museum includes a restored Works Progress Adminsitration mural, "The Horse and Buggy Give Way to Modern Methods of Mail Transporation." The Mineola Nature Preserve, which includes birding, walking trails, disc golf, camping and fishing. The historic Select Theater is one of the oldest continuously



running theaters in the country and home to the Lake Country Playhouse and Lake Country Symphonic Band. The Mineola Country Club offers 9-hole golf. Lake Holbrook is about five minutes west.



**More Information:**  
[www.mineola.com](http://www.mineola.com)

### 1 Main Gallery

inside the 1901 Courthouse at  
1 Peter Whetstone Square  
Open Tue-Fri 10am-4pm, Sat 11am-2pm

### 3 Inez Hatley Hughes Research Center

104 East Crockett  
Please call for Hours or an Appointment  
903-935-8417, ext 1, option 1

H · A · R · R · I · S · O · N   C · O · U · N · T · Y

## Historical Museum

N. WELLINGTON ST.		N. WASHINGTON AVE.	HWY. 80
		N. BOLIVAR ST.	E. BURLESON ST.
	4		E. RUSK ST.
			E. AUSTIN ST.
		1	E. HOUSTON ST.
			2
	S. WASHINGTON AVE.		E. BOWIE ST.
			E. FANNIN ST.
		3	E. CROCKETT ST.



# Nacogdoches

Considered to be the oldest town in Texas, Nacogdoches was founded in 1779 by Don Antonio Gil Y'Barbo on land previously settled by Caddo Indians and Spanish conquistadors. The local Caddo came to East Texas around 800 A.D., building log cabins and burial mounds between the Banita and Llanana creeks. The Spanish arrived and built missions around 1716, at the same time the French began to explore East Texas from their Louisiana outpost. The city became Mexican territory after the revolution in 1821, but disagreements over land titles between the Mexican government and settlers would lead to the Fredonia Rebellion, and relations between Mexico and Texas turned into fighting in the early 1830s. Adolphus Sterne led a group of Texas revolutionaries and forced the Mexican garrison out of Nacogdoches at the Battle of Nacogdoches on Aug. 2, 1832. The city would later become part of the Republic of Texas, the United States, the Confederacy and then back to the United States. Post Civil War, the city suffered until the railroads arrived in the 1880s and turned the city's economy into one of commerce

**Can't Miss Events:** Nacogdoches is known as the Garden Capital of Texas, and offers a bevy of seasonal attractions to go with that, including the Azalea Trail in March, the home garden tours in May, the Texas Blueberry Festival in June, fall foliage trails and Pick-Your-Own activities in June and July. The Ruby M. Mize Azalea Garden boasts more than 7,000 plants and blooms mid-March to mid-April.

**Other Attractions:** El Camion Real de los Tejas and the Calle del Norte intersect here, and offer a glimpse into the area's historical past. The Caddo Mounds, a state historic site, showcases the area's Native American history. Stephen F. Austin State University offers theater and musical performances, sporting events and more throughout the year, as well as a planetarium. The city is also home to the Cole Art Center, Cole Concert Hall, Downstage Theater, Fortney House, Lamp Lite Theater, Banita Creek Hall, as well as several wineries and breweries. Outdoor enthusiasts will enjoy Lake Nacogdoches, the Sam Rayburn Reservoir, SFA's experimental forest and gardens and local farms. A mural tour helps tell the story of Nacogdoches in art



From towering pines to small-town charm, East Texas is a place where tradition meets opportunity. Whether you're here to visit, work, or put down roots, you'll find friendly faces, strong communities, and a deep love for faith, family, and freedom. We're proud to call East Texas home—welcome, ya'll!

David and Joanne Shofner



**More Information:**  
[www.visitnacogdoches.org](http://www.visitnacogdoches.org),  
[www.nactx.us/1](http://www.nactx.us/1)

# New London

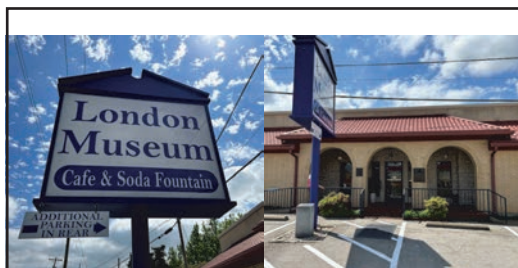
**L**ocated on Texas 42 south of Kilgore and just east of Overton, New London is known for its tragic history. In 1937, almost 300 students and staff were killed in an explosion at the London School caused by a gas leak. The event is considered the worst school disaster in the United States and led to safety improvements still in use today – that sulphuric smell was added to natural gas so that people would be able to tell when there is a leak.

**Can't Miss Events:** Every two years, the New London community gathers to remember the school explosion with a memorial service.

**Other Attractions:** The London Museum offers preserved belongings, newspapers, photographs, school memorabilia and more from the explosion, as well as temporary exhibits on a number of topics, including local artists. Hot lunches are prepared Mondays through Fridays at the museum's cafe, and an old-fashioned soda bar offers cold refreshments.



**More Information:**  
[www.newlondonschool.org](http://www.newlondonschool.org)



## Admission:

Adults \$5.00

Students \$3.00

Groups please call in advance  
for reservations.

## Museum Hours:

Mon-Fri.

9am-4pm

Sat. (March - August)

10am-3pm

# London Museum

10690 Main Street (P.O. Box 477)

New London, Texas 75682

903-895-4602

[www.newlondonschool.org](http://www.newlondonschool.org)



# Overton

**O**verton sits nestled in an area in both Rusk and Smith counties about 16 miles northwest of Henderson. It was laid out in 1873 at a site that was to be the junction of two railroad lines and was named for Frank Overton, an early settler who owned land in the area and donated some of it for a townsite, according to the Texas State Historical Association. Overton was a principal shipping point for the International-Great Northern, the first post-Civil War rail system in Rusk County.

**Can't Miss Events:** Overton is home to the Texas A&M AgriLife Research and Extension Center, which supports agricultural and horticultural research. Early each summer, the center hosts a Horticulture Field Day, showcasing a variety of flowers and plants that can be grown in the region. The city also hosts regular seasonal events, including National Night Out, Halloween trick-or-treating and a Christmas parade.

**Other Attractions:** In the heart of town is City Park, with its recreational lake for boaters and water skiers. Fishers can drop a line from the low banks on the southeast or the dam on the north. Joggers can pace under the shade and permanent picnic tables entice outdoor gourmets. Nearby are the manicured nine-hole golf course, RV Park, open-air amphitheatre for rent and the little league baseball field.



**More Information:**  
[www.cityofoverton.com](http://www.cityofoverton.com)



# Quitman

**L**ocated at the junction of Texas 154, Texas 37, FM 778 and FM 2966, Quitman is the county seat in Wood County and sits about 10 miles north of Mineola. It is named for John A. Quitman, a governor of Mississippi and prominent figure in the Mexican War. Quitman is also where famed actor Sissy Spacek grew up.

**Can't Miss Events:** According to a 1899 news article, "The first meeting of the old settlers of Wood County, and their representatives, was held in the town of Quitman, Wednesday, August 2, 1899...". Since then, the Old Settlers Reunion has been held annually on the first Weekend in August at Jim Hogg Park and runs Wednesday through Saturday.

**Other Attractions:** Quitman is known as the Gateway to Lake Fork, and the bass fishing lake offers a variety of water sports and other activities. Governor Jim Hogg City Park includes a splash pad. Also at Jim Hogg City Park is the Wood County Arboretum and Botanical Gardens.



The 100-year old Stinson House is located near the arboretum as is the nature walk. The Carroll Green Civic Center plays host to a number of concerts, fundraisers and more throughout the year. The Quitman Public Library is home to one of the best genealogy departments and the Wood County Genealogical Society. The Forever Young Activity Center (FYAC) is the hub for senior citizens in the area.



**More Information:**  
[www.quitmantx.org](http://www.quitmantx.org)

# Sulphur Springs

**Can't Miss Events:** Holiday and annual events include the UPRA Rodeo in April, the Dairy Festival in June, a Fourth of July event and regular shopping and farmers market events.

**Other Attractions:** One of the more unique attractions in Sulphur Springs is on the town square: the Glass Bathrooms. The first of their kind in the United States, the public restrooms are built with one-way mirrors so the person inside can see out, but no one can see in. Art and theater attractions include the Main Street Theatre and Music Box Museum. The Sinclair World War II Collection showcases the T-Patchers, or the Texas National Guard. The Southwest Dairy Museum offers guided- and self-guided tours, as well as ice cream treats. Lake Sulphur Springs offers fishing and boating year-round.



**More Information:**  
[www.sulphurspringstx.org](http://www.sulphurspringstx.org),  
[www.visitsulphurspringstx.org](http://www.visitsulphurspringstx.org)



# Troup

**T**he City of Troup, located in the rolling hills of East Texas near Tyler, is partially in North Cherokee and Southern Smith Counties. The International Railroad Company opened the Palestine-Troupe Line on November 9, 1872, and the first settlers of Troupe, or Zavalla as it was first known, came from Old Knoxville and Old Canton. In 1909, the “e” was dropped from Troupe at the request of the railroad.

**Can't Miss Events:** Troup hosts a community fireworks show each July, as well as a Holiday in the Country Christmas shopping extravaganza and a Christmas parade.

**Other Attractions:** The Hilltop Country Club offers a 9-hole golf course. The Zack Taylor Park is home to the Joe Layne Family Splash Pad. Troup is also a short drive from Lake Tyler.



**More Information:**  
[www.trouptx.com](http://www.trouptx.com)



# Tyler

**T**yler, located just south of Interstate 20 about 99 miles southeast of Dallas, is a major East Texas hub. The city was established in 1846 when the Texas Legislature voted to establish Smith County and a corresponding county seat. “The townsite, located near the geographic center of the county, was selected by a panel of commissioners appointed by the legislature and was named for President John Tyler in recognition of his support for admitting Texas to the United States,” according to the Texas State Historical Association.

**Can't Miss Events:** The Tyler Rose Festival honors the city's rose-growing industry each year with a flower show, art exhibits, a parade and the annual Rose Queen coronation. The East Texas State Fair takes place each September.

**Other Attractions:** Caldwell Zoo is popular with kids and families. The Tyler Rose Garden offers both gardens and the Tyler Rose Festival Museum, which displays the dazzling gowns and history of the Rose Festivals from years past. The Azalea and Spring Flower Trail blooms from March to April. Tyler Junior College boasts a planetarium and the Tyler Museum of Art. Tyler's railroad depot is the home of the



Cotton Belt Depot Museum, and the Tyler Transit offices. Tyler State Park just north of Tyler is a 985-acre park in the rolling hills features a 64-acre lake, campgrounds, hiking trails, pavilions, cabins, mountain biking, nature studies, canoes, paddle boats, kayaks, bike boats, jon boats, park store and much more. The Cowan Center at UT Tyler offers live music, plays and musicals each season. The Oil Palace also hosts concerts. The Tiger Creek Wildlife Refuge is also a popular attraction.



**More Information:**  
[www.cityoftyler.org](http://www.cityoftyler.org)  
[www.visittyler.com](http://www.visittyler.com)



# Whitehouse

**W**hitehouse is located about six miles southeast of Tyler on Texas 110. A Quapaw camp was located in the area in 1818. According to the Texas State Historical Association, “Travelers from Tennessee, Alabama, Georgia, Virginia, and North and South Carolina first came through the area in 1836 en route to San Antonio to help Texas defend the Alamo, but arrived after the fort had fallen. Impressed with the countryside, they returned home, collected their families, formed a covered wagon train, and moved back to settle in the area.” The city got its name after the railroad came, as steam locomotives stopped to take on water near the “white house.”

**Can't Miss Events:** Freedom in the Park takes place each Memorial Day weekend and includes a barbecue contest, car show and fireworks.



**More Information:**  
[www.cityofwinnsboro.org](http://www.cityofwinnsboro.org),  
[www.winnsboro.com](http://www.winnsboro.com)



**Other Attractions:** City Park includes a large splash park designed for toddlers to elementary age children and concession that is open from late May to late August (weather permitting). Gardenview Park is a natural green space with picnic tables near Blackhawk Creek that meanders through the park.



## GOURMET CRAFT FOOD WITH A TWIST

BREAKFAST, LUNCH & DINNER

- Appetizers
- Soups
- Salads
- Wood Fired Pizza
- Gourmet Burgers

- Grilled Steaks
- Pork Chops
- Pasta
- Seafood
- Smoked Meatloaf

- Specialty Items
- Artisan Desserts
- Full Bar
- Wine
- Craft Beer

218 N. Main Street Winnsboro Texas 75494

[pykescrossroadsrestaurant.com](http://pykescrossroadsrestaurant.com) (903) 312-9602

# Winnsboro

**W**innsboro is located about 15 miles northeast of Quitman at the junction of Texas 11 and Texas 37. The town, first settled in the early 1850s, was named for John E. Wynn, an Englishman who settled in the area. Originally the settlement's name was spelled Wynnsborough, but when a post office was established in 1855, it was changed to Winnsborough, and later in 1893 the town's name was shortened to Winnsboro, evidently at the request of city leaders, according to the Texas State Historical Association.

**Can't Miss Events:** Known as the "Home of Autumn Trails" since 1959, Winnsboro celebrates the beauty of fall every October. The entire month is filled with arts and crafts, parades, antique cars and tractors and a trail ride through the scenic countryside, as well as a national pepper-eating contest and rodeos. Seasonal events include BLOOM, a spring festival; the Winnsboro Art & Wine Festival, which offers award-winning wines and brings in local artists in November; the Winnsboro Cowboy Music and Poetry Gathering, which provides a platform for telling the stories of East Texas Cowboys through art, music and poetry; a



Festival of Books; and classic car show.

**Other Attractions:** The downtown Bowery Pedestrian Park offers boutique shops, cozy cafés, antique stores and lively galleries featuring local talent. The Winnsboro Center of Arts brings ongoing concerts, plays, art exhibitions and workshops. Other popular activities include a colorful mural walking tour, an American Pop Culture-themed mini golf course, a day spa, the award-winning farmers' market, a history museum, in-line hockey, scenic parks, and fishing and boating on nearby lakes. Families will enjoy Creekside Mini Golf and the farmers market.

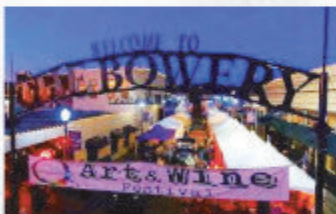


## More Information:

[www.cityofwinnsboro.org](http://www.cityofwinnsboro.org),  
[www.winnsboro.com](http://www.winnsboro.com)



**Dining • Arts • Entertainment • Music • Festivals •  
Farmers Market • Lake Proximity**



**We have something for everyone!**

<http://winnsboroonlineguide.com>

**WINNSBORO  
TEXAS**





# A Small Town Worth Visiting



Visit  
**MARSHALL**  
— TEXAS —

 VISITMARSHALLTX

 VISITMARSHALL

 VISITMARSHALLTEXAS.COM

# "Sidetrack in Mineola, Texas"



- Antiques, Boutiques, Vintage, Resale, Consignment & More
- Unique Restaurants, Eateries & Bakeries, Coffee Shops & Sweets
- Museums & History (State & Local markers throughout the City)
- Entertainment, Music, Festivals & Events, Holiday Lights & Magic
- Seasonal Farmers Market
- Parks, Playgrounds, Splash Park, Golf Course
- Civic Center & RV Parks
- Lakes, Fishing, Boating, Swimming, Camping
- 3,000 Acre Nature Preserve with biking, walking & equestrian trails, disc golf, playground & pavilion, wildlife



Iron Horse Square Park with  
FREE Mini Train ride.  
[www.ironhorsesquare.org](http://www.ironhorsesquare.org)



Mineola Nature Preserve  
[www.mineolanaturepreserve.com](http://www.mineolanaturepreserve.com)

**Mineola Marketing & Tourism Department**  
PO Box 179 300 Greenville Hwy  
Mineola, TX 75773 1-800-MINEOLA



**Mineola.com**



Follow us on  
Facebook, Instagram & X